

GULF TUNNELING

T: +974 4465 1401

F: +974 4476 4472

E: info@gulftunneling.com

W: www.gulftunneling.com

CLIENTS

Ashghal
Barwa
Kahramaa
Lusail
Qatari Diar
Qatar Foundation
Qatar Petroleum



GULF TUNNELING

O V E R V I E W

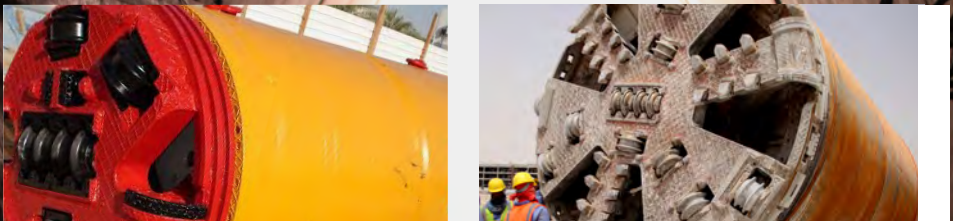


الخليج للتأفان
GULF TUNNELING

CONTROL CONTAINERS



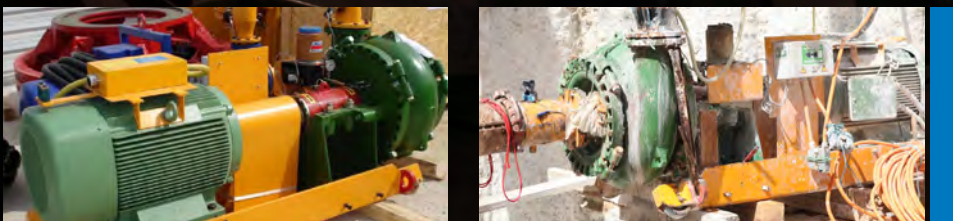
TBM MACHINES



SEPARATION PLANTS



WATER PUMPS



HDD MACHINES



OTHER EQUIPMENT



GULF TUNNELING

GULF TUNNELING TRACK RECORD (COMPLETED PROJECTS)

Project Name	Client	Main Contractor	Tunneling Details	
			Pipe Size (mm)	Qty (m)
BP # 1G (3) Al Luqta Micro-Tunnels & Ducts	Qatar Foundation for Education	Qatar Building Company	1,200 600	508 889
Muraikh Area Drainage & Outfall	Drainage Affairs, ASHGHAL	Qatar Building Company	1,500 2,000 2,400	1,283 1,082 4,437
Doha Expressway / D-ring Road Interchange	Road Affairs, ASHGHAL	QBC - TERNA JV	2,000	2,749
PS 25 & 26 Catchments Sewerage Phase 2	Drainage Affairs, ASHGHAL	Qatar Building Company	600 800 1,200 1,600 2,000	73 148 565 977 637
Abu Hamour Area Sewerage Phase 1	Drainage Affairs, ASHGHAL	Qatar Building Company	300 600 1,000	1,648 876 1,860
PS 25 & 26 Sewerage Catchments	Drainage Affairs, ASHGHAL	Qatar Building Company	350 450	60 60
Industrial Area Sewerage Phase 1	Drainage Affairs, ASHGHAL	Qatar Building Company	600 800 900	162 1,577 844
Zoo Road to Rayyan Road	Drainage Affairs, ASHGHAL	Qatar Building Company	100 - 800	1,144
PS 25 & 26 Catchments Sewerage	Drainage Affairs, ASHGHAL	Qatar Building Company	600	73
Qatar Power Transmission System Expansion Phase V 111 / EHV Power Cable	Nexan	Qatar Building Company	700	640
GTC-78 Upgrading of West Bay & Gharaffa Water Stations	Kahramma	Hassan Juma Backe	1,000 1,200	154.94 390.58
TOTALS:			24,400	22,838

GULF TUNNELING ONGOING PROJECTS

Project Name	Client	Main Contractor	Tunneling Details	
			Pipe Size (mm)	Qty (m)
Doha & Rayyan Sewerage Phase 3 CP 626/3	Ashgal Drainage	Nael Bin Harmal	400	790
			500	630
			600	660
			1,000	2,380
Doha & Rayyan Sewerage Phase 2 CP 626/2	Ashgal Drainage	Qatar Buiding Company	200	2,100
			300	5,790
			400	3,090
			500	813
			600	2,407
			1,000	1,366
Lusail Development Sewerage treatment	Qatrai Diar / Lusail	Qatar Buiding Company	2,000	1,120
Development of Roads at North Khalifa & Markhiya Area, Zone 32 & 33	Ashgal Roads	QBS International	400	197
			600	57
			800	1,135
Interconnecting Barwa City & Barwa Commercial Avenue	Barwa / Hochtief	MACE	3,000	334
Reinforcement of Water Transmission - GTC 275/2009	Kaharamaa	HBK	1,200	100
Road crossing	Ashgal Roads	Yuksel-Midmak /Aject	3,000	378
Lusail Development & Sewerage Treatment	Qatari Diar / Lusail	Qatar Building Company	2,000	1,120
Lusail Development Project Construction (CP2)	Qatrai Diar / Lusail	Aljaber&Partenr	1,600	1,170

GULF TUNNELING

Gulf Tunneling (GT) is an engineering firm that specializes in planning and executing **complex boring & tunneling works**. Since inception in 2002, we have become a leader in the field of Micro-Tunneling in the State of Qatar.

Our acquired technological and operational experience—coupled with the rapid growth of the region—allows us to partake in great infrastructure projects and developments throughout the State of Qatar, with over **45,000 meters of tunnel** currently installed or ongoing. Our underground installations have reached **remarkable depths**, on **every type of ground condition**, with pipe diameters reaching several meters.

We have served government agencies, gas majors, and private contractors/developers using our field-expertise and our fleet of equipment. Our services include installation of all kinds of underground gravity and pressure pipelines for drainage, water mains, and utility tunnels.

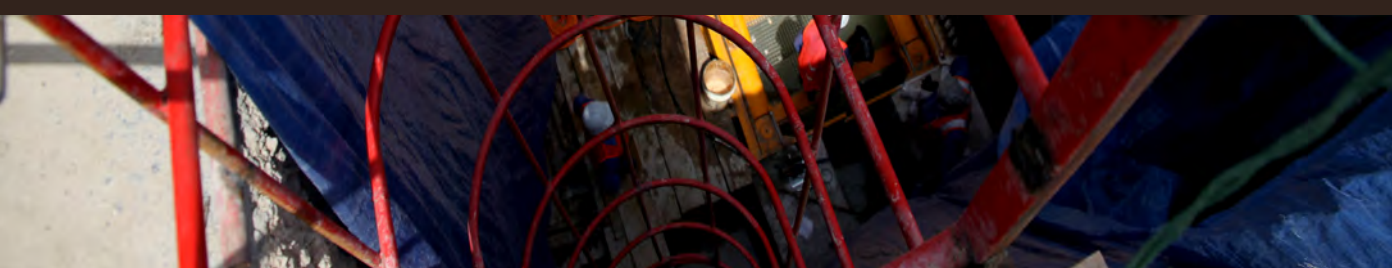
Gulf Tunneling is considered the **biggest self-contained Micro-Tunneling company in the Gulf**. Our technical & commercial team is multinational, comprised of professionals with project experience from around the world. HSE has always been a top priority: we have maintained a record of zero Loss-Time Incidents (LTI) in every project. At Gulf Tunneling, our objective is excellence.

CONTROL ROOM



Inductive measuring system allows for highly reliable steering operation.

HEALTH, SAFETY, ENVIRONMENT



We have maintained a record of zero Loss-Time Incidents (LTI) in every project.